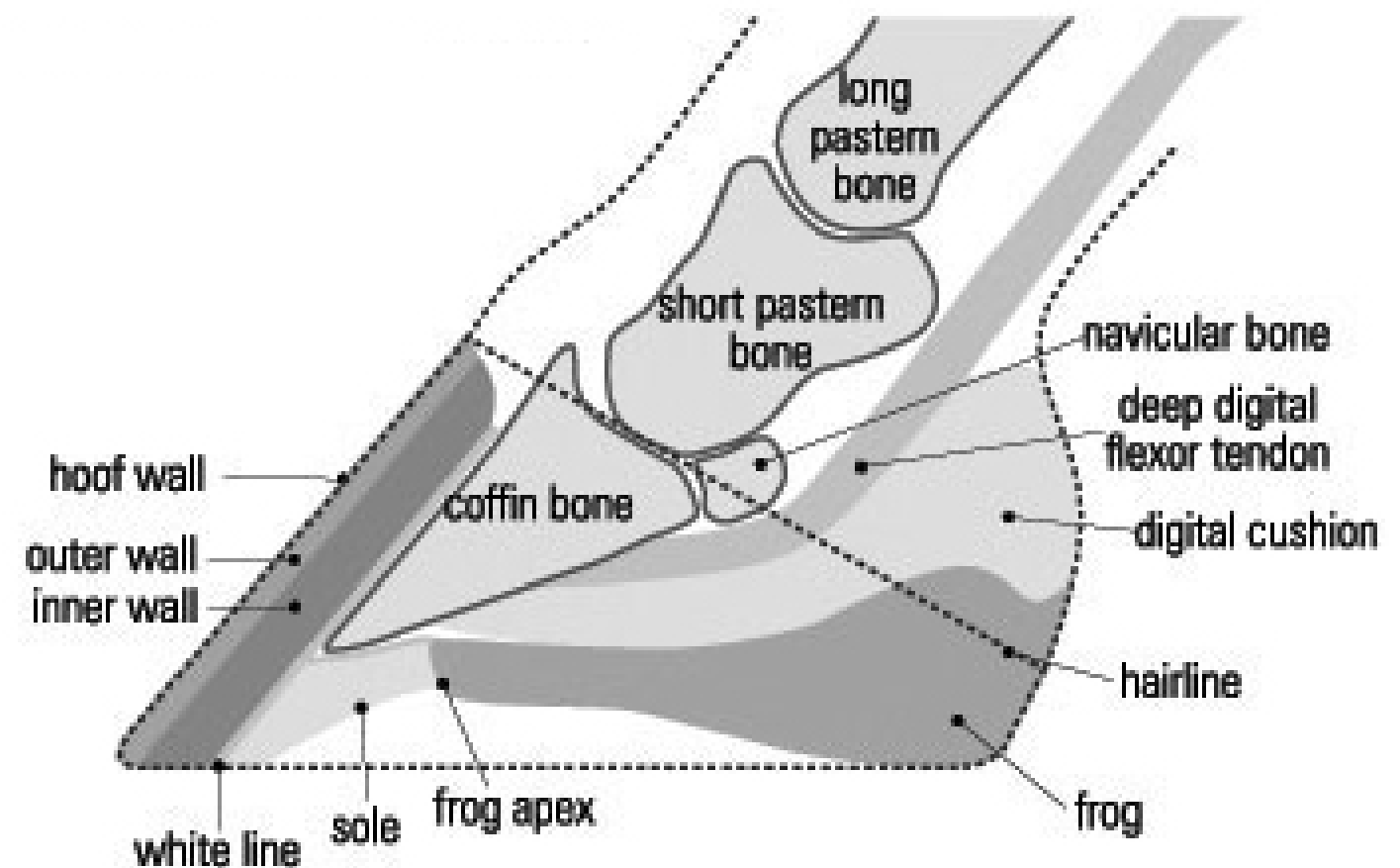
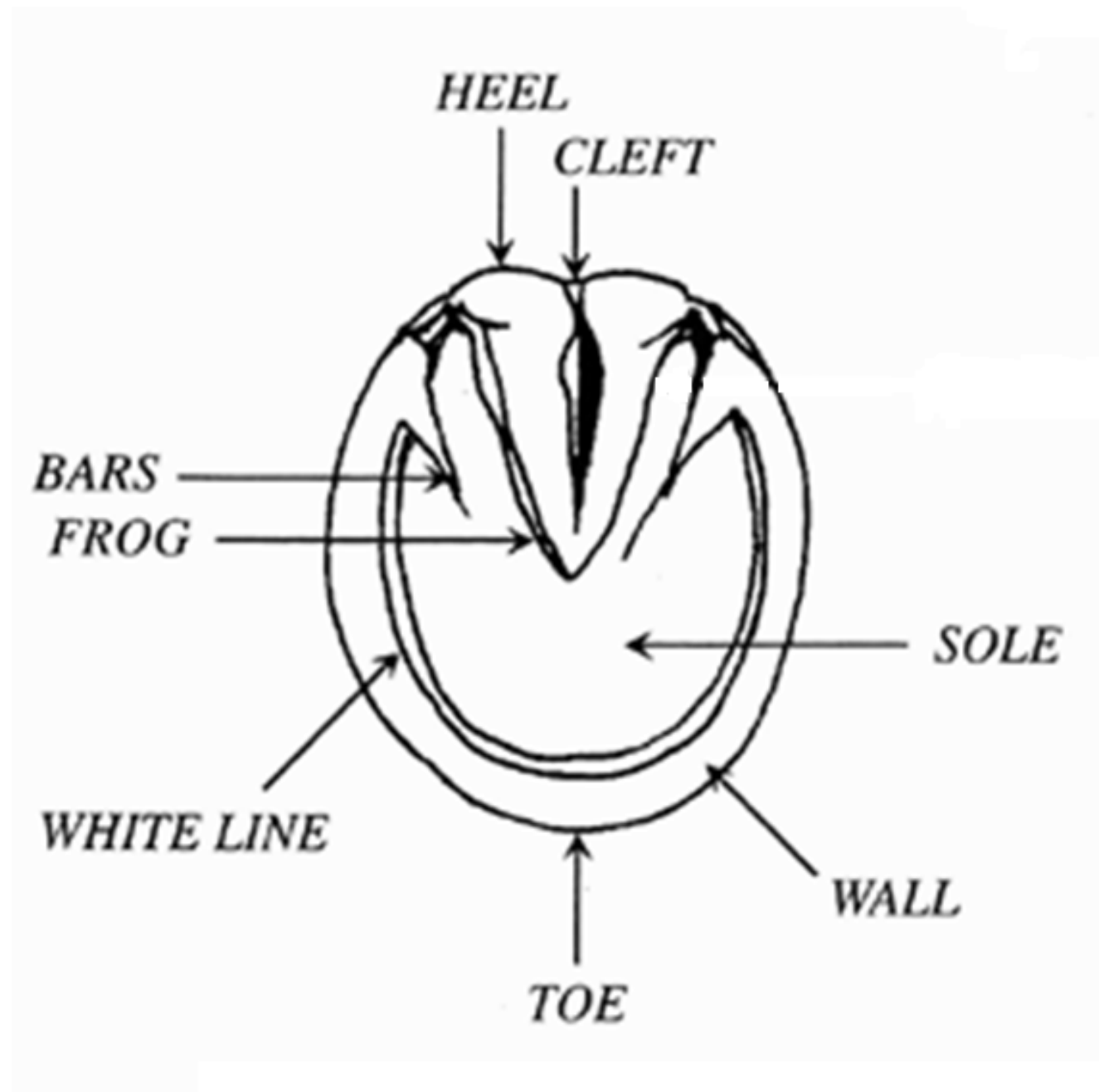


PARTS OF THE HOOF



1. Nostril
2. Muzzle
3. Forelock
4. Poll
5. Curb/Chin groove
6. Projecting cheek bone
7. Crest
8. Gullet
9. Jugular groove
10. Windpipe
11. Shoulder
12. Point of shoulder
13. Breast
14. Chest
15. Withers
16. Back
17. Loin
18. Croup
19. Dock
20. Tail
21. Ribs (8 true, 10 false)
22. Point of hip
23. Hip joint
24. Buttock
25. Point of buttock
26. Thigh
27. Flank
28. Sheath
29. Stifle joint
30. Point of stifle
31. Gaskin
32. Hock
33. Point of hock
34. Chestnut
35. Tendons
36. Cannon bone
37. Fetlock joint
38. Pastern
39. Coronet
40. Foot
41. Fetlock
42. Ergot
43. Hollow of pastern
44. Elbow
45. Forearm
46. Knee

PARTS OF THE HORSE

